

# Transformation

**TIMES'**

No.5 –Sept 2016

"EMPOWERMENT NEWS FROM THE PEOPLE FOR THE PEOPLE"

**BREAKING NEWS !!!!**  
**WATER LICENCE GRANTED FOR NEW PROJECT**  
*Read more on page 2. . .*

## SRCC Transformation Plan

### Ownership

- ❖ Existing farms
- ❖ New farms

*Read more on pages 4 - 8*

### Participation

- ❖ Ikamva Lethu Citrus Empowerment Project
- Read more on page 2...*

### Community Upliftment

- ❖ SRCC Foundation

*Read more on page 10 - 12...*

### Education

- ❖ KK113 Project
- ❖ Masifunde Sonke Training Centre

*Read more on page 3...*

## **BREAKING NEWS – SRCC / IKAMVA LETHU CITRUS EMPOWERMENT PROJECT**

Work on the unique SRCC / Ikamva Lethu Citrus Empowerment Project has just taken a major leap forward.....the project has been awarded a water licence by the Department of Water Affairs and Sanitation which has suddenly brought the project to life!!! The future success of the project was very much dependant on the allocation of a water licence which seemingly was in the balance but the recent award of the water licence has changed matters dramatically as it now allows us to commence with serious and meaningful planning of the implementation phases of the project.

The water licence is for 675 hectares equivalent of water for a period of twenty years, subject to a number of conditions and will be renewable if compliance with such conditions is maintained over the period. One of the most important conditions is that the empowerment shareholding in Ikamva Lethu Farms (Pty) Ltd, the operating company, in whose name the licence has been registered, may not fall below 59% at any time. In our project proposal, the structure of the Ikamva Lethu shareholding was proposed as follows:

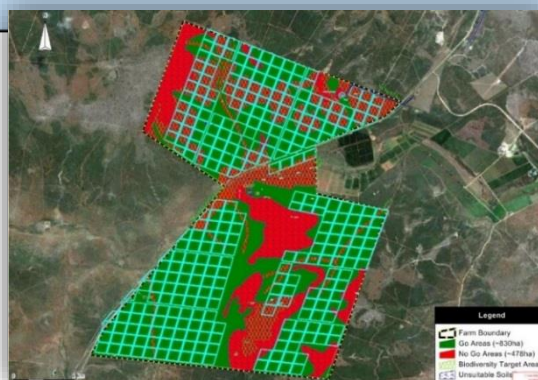
|                           |         |                                |
|---------------------------|---------|--------------------------------|
| SRCC                      | 5.5%    | } 60% Empowerment shareholding |
| SRCC Packhouse Workers    | } 25.5% |                                |
| Ikamva Lethu Farm Workers |         |                                |
| Growers' Farm Workers     |         |                                |
| Grower Participants       |         |                                |
| Total                     | 100.0%  |                                |

We are therefore very excited to progress in earnest with the Environmental Impact Assessment with the assistance of our environmental consultants and we will endeavour to obtain final approval and confirmation of the arable areas of the farm within the next year. Immediately thereafter we will commence with the laying of the water pipeline and construction of the dams as planned. The first phase of orchard preparation will commence during 2018 and the objective is to commence the planting of citrus trees during the latter half of 2019!

As reported in previous editions, the project is broad-based in order to allow a wide spectrum of participation and inclusivity and the farming enterprise, as it matures, will be large enough to provide meaningful returns to all shareholder participants. It is estimated that approximately 350 – 400 previously disadvantaged people will become shareholders in this exciting project. It is also envisaged that the surrounding communities of the Sundays River Valley will benefit directly from allocations from the future profits to be generated.

A major impact of the project will be the employment creation – it is expected that over time 800 permanent and seasonal jobs will be directly created by this project while the growth in the citrus volumes it generates will result in further job opportunities in the local value chain.

Needless to say, the levels of excitement relative to this project have exploded and all involved are looking forward to witnessing its progress!!



## **Educational Project – KK113**

As education, training and skills development are integral to our transformation efforts, we are both determined and well-positioned to bring to reality our exciting project proposal for the establishment of a citrus training academy or “farm school” on the property in the Addo area known as KK113.

As previously explained, our objective is to provide on this property, which is owned by the Sundays River Valley Municipality, the opportunity for young black graduates who are interested in citrus farming, to become the farm managers/owners of the future. The farm would be commercially operated and supported by SRCC’s Primary Production Dept. and the beneficiaries would be the farm workers and the trainees as well as the surrounding communities. The graduates admitted will be offered all the training required, in the classroom and on-the-job, to become fully fledged citrus farm managers over a three to four year period.

The plan includes the establishment of vegetable production, a nursery, a pruning service and the citrus orchards which will serve as the citrus training facility. An estimated 400 jobs will be created by this project and the necessary skills development would be provided to all the graduates and workers on the farm through the Masifunde Sonke Training facility on one of our existing empowerment farms, where training from basic reading and writing through to management practices is offered.

This KK113 property, which is approximately 300 hectares in extent, has not been utilised for many years and the project concept submitted to the SRVM will ensure that its development will provide enormous benefit to many previously disadvantaged people in the valley. We understand that the project is currently featured on the agenda of the SRVM council meetings and we look forward to receiving the formal approval to continue with this worthwhile project in the near future.

Below is a diagram of the KK113 farm layout as proposed in our project plan.



| SRFT                |            |
|---------------------|------------|
| Hectares            | 420 ha     |
| 2015 Production     | 9,505 tons |
| 2015 Export Cartons | 406,247    |
| Beneficiaries       | 27         |

## The structure of the SRFT Farming Enterprise is as follows:

**Sundays River Farming Trust (SRFT)**  
(Workers' Trust with 27 beneficiaries)



**Sikhula Sonke Enterprises (Pty) Ltd**  
(operating company)



5 consolidated farming properties:

- Willowtree
- Glengrove
- Siyaphambile
- Sophumelela
- Siyathemba



## Siyaphambile

At Siyaphambile, the new development within the SRFT group of farms, the soil preparation for Phase 3 of the new development is almost complete ( as seen below) and the irrigation installation is now in progress, where after the planting of 36 ha of lemons will commence. This is the final phase and will take the total development to 100 ha of lemons.

The electrical fence has also been erected and is in full working order with the cooperation of Eskom.



## Glengrove

At Glengrove, orchards were cleared, as can be seen above left, as part of preparations for future replanting of lemons. Two orchards of novas were also replanted.

All windbreaks were removed, chopped up and used as compost.

### **Siyathemba**

Preparations are underway at Siyathemba for replanting of novas, as seen right. All windbreaks were also removed, chopped up and used as compost.

The dam and pump house have also been fenced for security reasons.



### **Sophumelela**

At Sophumelela, the construction of an ablution block, as seen below right, is in process for the pickers as well as an eating area (below left) which will also be used as a waiting area for clinic visitors and is equipped with an air conditioner for the very hot Valley summer months!

A new water system has also been installed for the staff houses for household use.

Preparations have started on 4 ha of soil which were cleared and developed for citrus replanting. The irrigation system was also upgraded.



## ***Sundays River Farming Trust (SRFT)/ Sikhula Sonke Enterprises***



### **Willowtree**

At Willowtree two orchards of midknights were planted and the windbreaks were removed, chopped up and used as compost.

The clinic on Willowtree farm, as seen left, has already been visited by many workers and is a great asset for the farm and its employees and beneficiaries.



## ***Luthando Farm (Pty) Ltd***

| <b>LUTHANDO</b>            |            |
|----------------------------|------------|
| <i>Hectares</i>            | 130 ha     |
| <i>2015 Production</i>     | 3,351 tons |
| <i>2015 Export Cartons</i> | 139,110    |
| <i>Beneficiaries</i>       | 49         |



### **Luthando Farm (Pty) Ltd**

The hostel at Luthando Farm is in the process of being converted into a gathering point and eating area for the personnel.

Trees have already been ordered for replanting and development of 12.9ha, and will commence during Oct 2016.

## ***Luthando Farm (Pty) Ltd (continued)***

### **Community Knitting Group**

The Libraries in the Sundays River Valley have become more than a Library service, they have become the community centres of the various surrounding areas including Paterson, Kirkwood, Enon, Addo, Nomathamsanqua, Moses Mabida and Valencia.

The activities offered are mainly for the young people, ranging from Story Hour for the pre-schoolers to holiday programmes for all school going learners, thereby ensuring their safety and entertainment during the long school holidays.

This was until the women from the various communities expressed an interest in learning to knit.

With the help of a sponsor, wool was purchased and the knitting project was launched.

The Staff members and volunteers from the various libraries were taught the basics and they, in turn, had to pass on their newly attained skills to their groups.

The group leader in Kirkwood contacted Ms Nokwanele Mzamo, the General Manager of Luthando Farm, to inform her of the project. Ms Mzamo, seeing the value in the exercise, offered her seasonal workers time off to attend these knitting lessons. The ladies loved the sessions and were very enthusiastic and determined to learn as much as they could while they were working at the farm.

At their last knitting session, they all thanked Mzamo for allowing them the time to learn the new skill and were all keen to return next year as they want to learn to add to their repertoire of stitches and they want to learn how to crochet!



## Mbuyiselo Plase (Pty) Ltd

### MBUYISELO

|                     |             |
|---------------------|-------------|
| Hectares            | 62 ha       |
| 2015 Production     | 1, 835 tons |
| 2015 Export Cartons | 60,078      |
| Beneficiaries       | 23          |

### Mbuyiselo Plase (Pty) Ltd

New development is planned at Mbuyiselo Plase and trees of the delta variety have already been ordered for replanting and development of 2.5 ha which will commence during Oct 2016.

### Wellness Programmes

A Wellness Drive was recently held again with great success. It included, amongst others, testing of blood pressure and sugar levels, providing educational information with regards to health issues, TB screening, HIV testing and referrals for medical attention.

The target set for 2016 was to test 600 farm workers from Sikhula Sonke Enterprises, Luthando Farm and Mbuyiselo Plase. The target was exceeded by testing 885 workers during the 7 days' Wellness Drive.



### **4th Annual Women in Agriculture & Agribusiness Summit 2016**

This is an annual event, held in Midrand Johannesburg, to create a platform for experts and delegates to discuss various aspects of agriculture in depth, in order to motivate women toward sector development.

It was attended by Ms Buyiswa Ndyenga, General Manager of Sikhula Sonke Enterprises, and Ms Nokwanele Mzamo, General Manager of Luthando Farm (Pty) Ltd, who found it to be extremely interesting and informative.

### **Citrus Research Symposium 2016**

This symposium was attended by Mr Jeffrey Rossouw (Farm Manager: Luthando Farm), Mr Philip Ndyenga (Farm Manager : Willowtree Farm) and Mr Edward Noketshe (Farm Manager : Sophumelela) together with SRCC staff.

Feedback was given on citrus research conducted for the Southern African citrus industry during the previous two years and was attended by a wide spectrum of citrus industry role players including international guests as keynote speakers.



### **New Transport**

With the financial support of Albert Heijn Foundation, a Netherlands-based non-profit organisation, a new Quantum mini bus (as seen below), was bought and will be used for the transport of learners when attending programs at the Masifunde Sonke Education and Training Centre.



## AWARDS

### **2016 Toyota New Harvest competition**

Ms. Nokwanele Mzamo, General Manager of Luthando Farm, and Ms. Buyiswa Ndyenga, General Manager of Sikhula Sonke Enterprises, were nominated to participate in the 2016 Toyota New Harvest competition.

The objective of this competition is to identify and reward the most successful previously disadvantaged farmer in South Africa, and to provide credit/recognition to those people/institutions/organisations/ agencies that are involved in the development of new farmers.

Ms. Ndyenga was selected as one of the five finalists and also as the only female finalist. The final winner will be announced at a function in Johannesburg on Thursday, 27 October 2016.

We wish Ms. Ndyenga success in this competition!

## SRCC FOUNDATION

*“Community upliftment through focus on health, education and the environment”*

### **Sport Development**

The SRCC Foundation agreed to meet the request to fund Savuka Stars this year as they make a concerted effort to develop and coach sport in Aqua Park, a neighbourhood in Kirkwood, even though they do not have proper sport fields available to them.

They train young people from Aqua Park and surrounds regularly in soccer and netball. The SRCC Foundation has provided them with the necessary equipment (as seen below), to further their coaching and development of young people taken from the streets.

**The coaches receiving their kit**



**The sport fields the children are being trained on**



## SRCC FOUNDATION *(continued)*

### **Masiphathisane crèche**

Masiphathisane crèche, which is situated in Msengeni, an RDP development adjacent to Moses Madiba, has received new desks, educational equipment and toys from The SRCC Foundation (as seen right).

The SRCC Foundation is also planning to do necessary maintenance work within the near future, as well as to refurbish the toilets and adding to these, to serve the 78 children who attend this crèche.



### **Bursaries**

Various companies outside the valley use the foundation as a conduit to donate towards bursaries for the underprivileged to enable them to receive proper schooling in the valley.

These donations further these companies' BEE scorecard while they invest in the future of these young people. The SRCC Foundation has already made a contribution of R 65 650,00 towards these bursaries.



### **Soup Kitchen – Bubele Service Centre**

The SRCC Foundation provides a monthly amount to two soup kitchens, Bubele Service Centre in Bersheba and Centre of Hope in Aqua Park, Kirkwood.

Bubele Service Centre provides a healthy meal to approximately 54 people and usually three times a week. They are in particular seeing to the elderly and the infirm and therefore also make deliveries of meals.

There are a few ladies who visit the centre on a regular basis to sew, knit and do beadwork (as seen left) which is again sold within the community to subsidise the kitchen.

### **Soup Kitchen – Centre of Good Hope**

The Centre of Hope has seen the greatest need to be the children of the community and they concentrate on providing children with at least one healthy meal per day (as seen right).

They are currently providing a healthy meal to approximately 150 children and this is provided five days of the week. Because of the large number of children having to be provided for, they have moved the kitchen to the community hall.

The ladies of this soup kitchen are being trained and will, in turn, train the young people in doing beadwork and sewing as well (as seen below). This is primarily to develop extra skills, while the sale of these items will help with the finances to run the kitchen.



### **Environmental Initiative**

Since the Waste Trade Company has been operating the recycling depot at Hermitage, more pack houses have made an effort to have their waste collected and sent to the depot to supplement the operation of the recycling plant, while a number of schools are also collecting their recyclable waste. This plant is now fully operational and recycling is done for cardboard, paper, tetrapak, tins and glass. This provides work opportunities for quite a few people.

The company also collects the recyclable waste from a number of businesses as far afield as Paterson and Kirkwood and will continue to do so as long as the quantity is sufficient to warrant the cost of the collection by the company's truck.

A while ago the Waste Trade Company had a clean-up drive in conjunction with the Addo Park in Nomathamsanqua and were able, with the help of a large contingent of helpers, to clean up a large section of the township. Each group was given an area to clean up and it was wonderful to see the difference it makes when people work together for a common goal.



*Editorial Team: Ken Nieuwenhuizen, Frikkie Olivier,  
Anne-Marié le Roux, Lorraine Marais  
Contact details: (042) 233 0410 / srftadmin@srcc.co.za*

