

- South Africa exported 3 619 tons of beef in January 2017, which is 3% lower than December 2016 volumes, but 21% higher than the corresponding month in 2016. Exports of fresh/chilled beef were 2 170 tons in January 2017, which is 5% more than what was exported in December 2016, and 58% more export volumes in the corresponding month in 2016. Exports of frozen beef were 1 449 tons in January 2017, a volume 12% lower than that of December 2016 and 10% lower than the corresponding month of 2016 (**Chart 2**).
- Medium term trends show a sharp increase in overall beef exports, from 14 634 tons in 2010 to 39 135 tons in 2016 (**Chart 1**). Frozen beef exports increased from 2 921 tons in 2012 to 18 067 tons in 2016 – a 5-fold increase. Meanwhile, fresh/chilled beef exports increased from 11 714 tons to 21 068 tons over the same period.
- Major markets for fresh/chilled beef include regional markets (Swaziland, Mozambique, Lesotho) as well as Middle East markets (Jordan, Kuwait and UAE) (**Chart 3**). Meanwhile, frozen beef markets include Far East markets (Viet Nam and Hong Kong), regional markets (Mozambique, Angola, Lesotho) and Middle East (Kuwait) (**Chart 4**).

Chart 1: RSA Annual Beef Exports (tons, 2012- 2016)

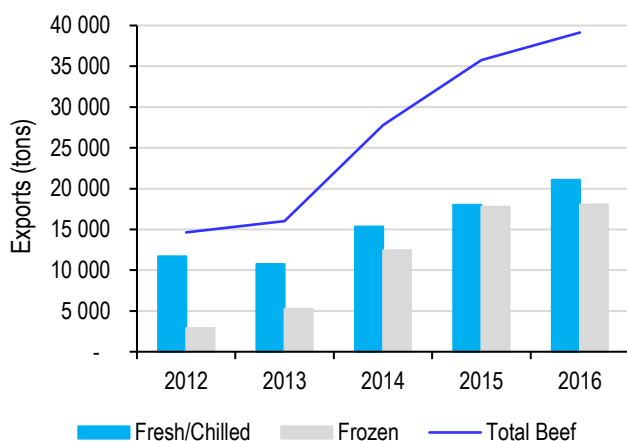


Chart 2: RSA m-o-m Beef Exports (tons, Jan. 2012 – Jan. 2017)

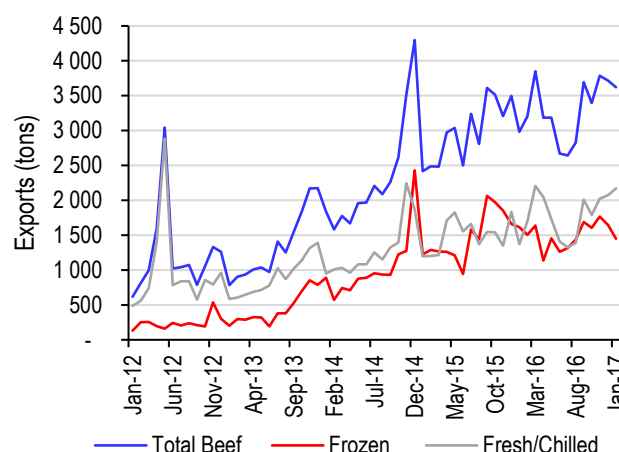


Chart 3: Fresh/Chilled Beef Markets (2012 – 2016)

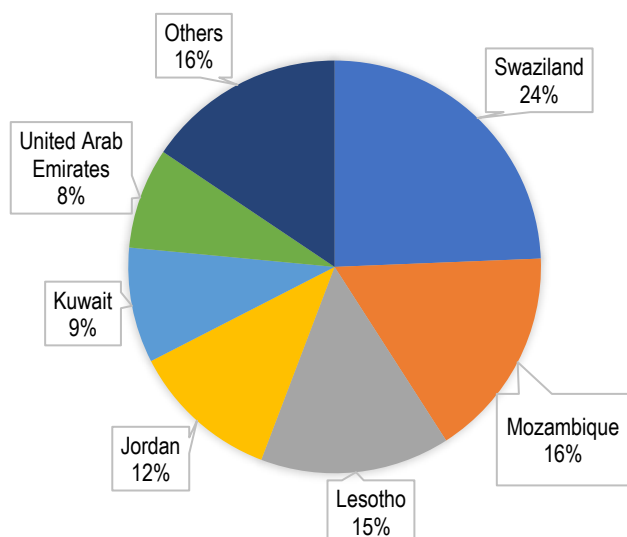
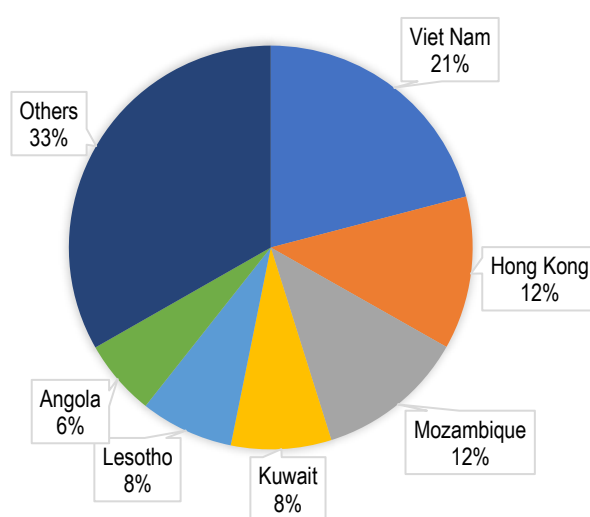


Chart 4: Frozen Beef Markets (2012 – 2016)



Source: SARS, Agbiz Research

Tinashe Kapuya (tinashe@agbiz.co.za) and Wandile Sihlobo (wandile@agbiz.co.za)



@TinasheKapuya @WandileSihlobo